



SAFETY SYSTEMS

# FIRST TIME SETUP GUIDE

RoadView Alpha Dash Camera



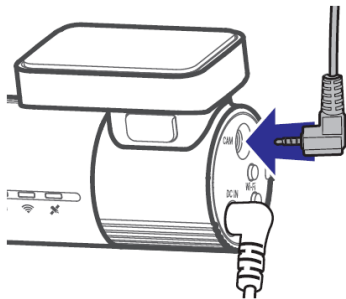


# CONGRATULATIONS

## RoadView Alpha Dash Camera

Congratulations on the purchase of your new RoadView Alpha Dash Camera. This document is designed to help you set up and use this device with ease. Keep this in the car or a safe spot, for easy reference if required.

Take a quick look over the diagrams below to get a better understanding of managing video files from the Dash Camera.



Please ensure your dash camera is plugged in to be operational.

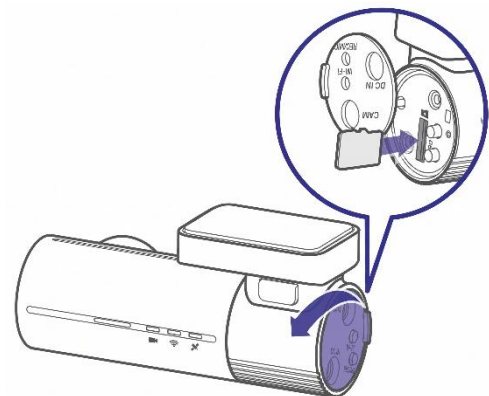
**FOR SUPPORT CALL 1800 818 288**

### Inserting the Micro SD card :

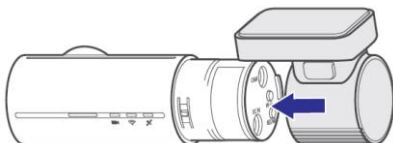
- Gently pull open the slot cover located on the side.
- Insert the Micro SD card into the slot with the metal contacts facing down, and press until it makes a 'click' sound.
- Close the cover to ensure the slot is not exposed.

### Removing the Micro SD card :

- Gently pull open the slot cover on the side.
- Lightly press the inserted Micro SD card with your fingernail.
- The card will pop out with a click sound.
- Carefully pull the card out by hand.
- Close the cover to ensure the slot is not exposed.

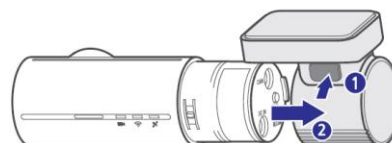


### Attaching the cradle



- Align the cradle as shown in the figure and push it onto the main body until it clicks into place..

### Detaching the cradle



- Press the lock button on the cradle, then slide the dashcam out of the cradle in the direction of the arrow.



# QUICK START GUIDE

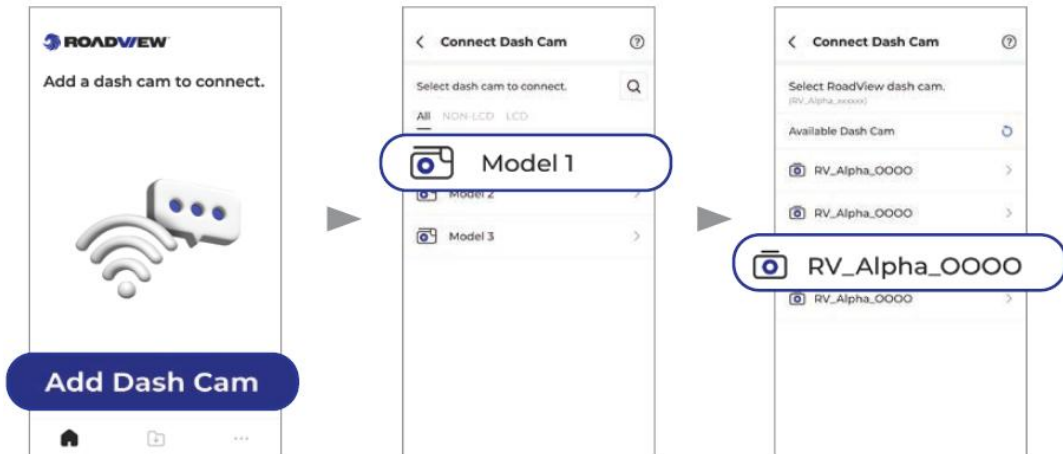
For connecting a Roadview Alpha Dash Camera via the RV Connect App with a Mobile device.

## INSTRUCTIONS

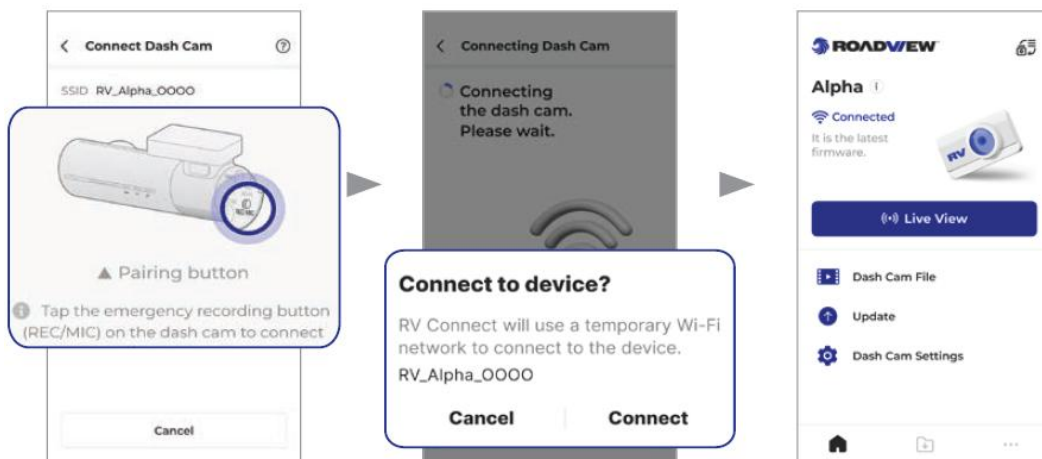
Install the "RV Connect" app from the Apple App Store or Google Play, then follow the instructions below to connect the dash cam.



### Connecting the Dash Cam



- Open the "RV Connect" app, and tap the **Add Dash Cam** button on the Wi-Fi home screen.
- Tap 'Alpha'.
- Select a dash cam Wi-Fi network with a name that begins with "RV\_Alpha".



- Tap the pairing (REC/MIC) button for the dash cam.
- Tap the **Connect** button. Dash cam registration and connection are complete.

Please refer to your User Manual for more in depth information.

**FOR FURTHER SUPPORT CALL 1800 818 288**



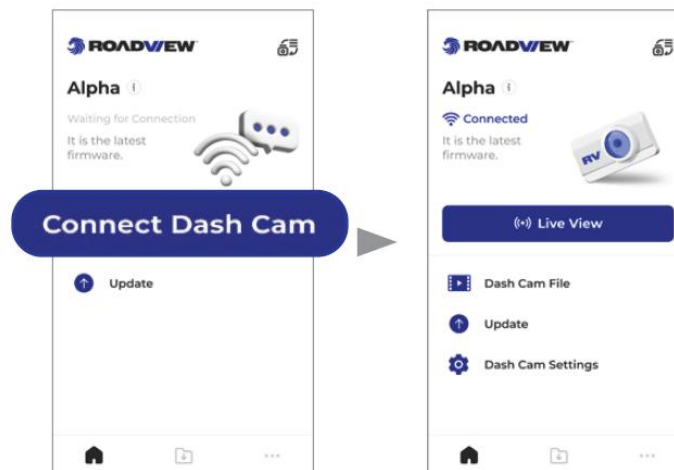
# QUICK START GUIDE

For connecting a Roadview Alpha Dash Camera via the RV Connect App with a Mobile device.

## INSTRUCTIONS

### Reconnection

After registering the device for the first time, fast reconnection is possible by tapping the **Connect Dash Cam** button from the home screen.



## Helpful Tips

### Wi-Fi Speed Tip

- Default Wi-Fi is set to 2.4GHz.  
For faster video download speeds:
- Dash Cam Settings → Environment → Wi-Fi Frequency → 5GHz

### LED Status Guide

- White: Recording
- White Blinking: Event / Motion detected
- Blue: Wi-Fi connected
- Blue Blinking: Waiting for Wi-Fi connection

### Basic Controls

- **Wi-Fi Password Reset**  
Press and hold the Wi-Fi button for 5 seconds.
- **Voice Recording ON/OFF**  
Press and hold the REC button for 1.5 seconds.
- **Power ON/OFF**  
Press and hold the REC/PWR button for 5 seconds.

Please refer to your User Manual for more in depth information.

FOR FURTHER SUPPORT CALL 1800 818 288